

# ZONING PLAT

## VIRGINIA MILITARY SURVEYS 5985, 6640 AND 7693

### TOWNSHIP OF BROWN, COUNTY OF FRANKLIN, STATE OF OHIO

LINE	BEARING	DISTANCE
L1	N13°53'38"W	68.30'
L2	N03°24'17"W	289.64'
L3	S07°03'37"W	417.99'
L4	N82°56'23"W	297.11'

- Ⓐ Luke C. Bates  
0.472 Acres  
I.N. 201304020053863
- Ⓑ Catherine A. Goshorn  
0.47 Acres  
I.N. 200404280095595
- Ⓒ Robert Barclay and Angela Barclay  
0.47 Acres  
I.N. 200308130255571
- Ⓓ Joan C. Stultz-Stout 1/4 int.  
0.47 Acres  
I.N. 199711030133021  
I.N. 201205150067921 (TOD Affidavit)
- Ⓔ Nancy J. Russell  
0.399 Acres  
I.N. 200703190047292 (TOD)  
I.N. 201308070134044 (TOD Affidavit)
- Ⓕ Anita K. Norris  
0.89 Acres  
I.N. 200710100177092
- Ⓖ Patricia M. Dawson  
1.41 Acres  
O.R. 825A15
- Ⓗ Betty J. Hetrick  
0.714 Acres  
Inst. 200909230143343
- Ⓘ Ernest C. Davis  
0.714 Acres  
D.B. 3227, Pg. 599
- Ⓛ Charles D. Starr  
0.546 Acres  
Inst. 200508040157269
- Ⓜ Beatrice L. Green  
2.500 Acres  
I.N. 201206080081635
- Ⓝ Keith L. Smith  
2.479 Acres  
I.N. 199805060110599
- Ⓞ Dennis E. Coter  
1.983 Ac.  
D.B. 12811, P. 003
- Ⓟ Prentice S. Redmon  
0.896 Ac.  
D.B. 3425, P. 994
- Ⓠ Nancy E. Stahl  
4.000 Ac.  
I.N. 200306110174963
- Ⓡ Craig R. Shuneson  
5.029 Acres  
I.N. 199912030299262
- Ⓢ Ryan J. McPherson & Lynne V. Gauthier  
2.527 Acres  
I.N. 201108110100355

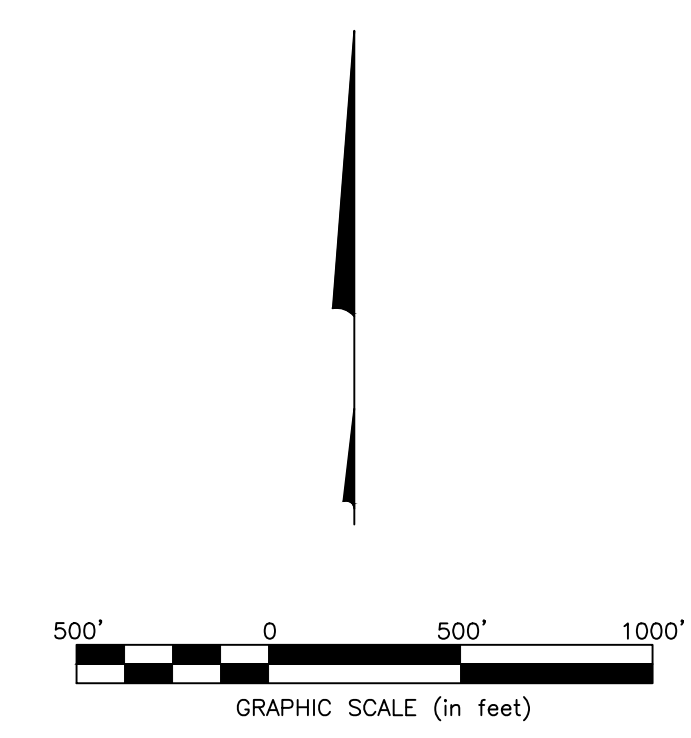
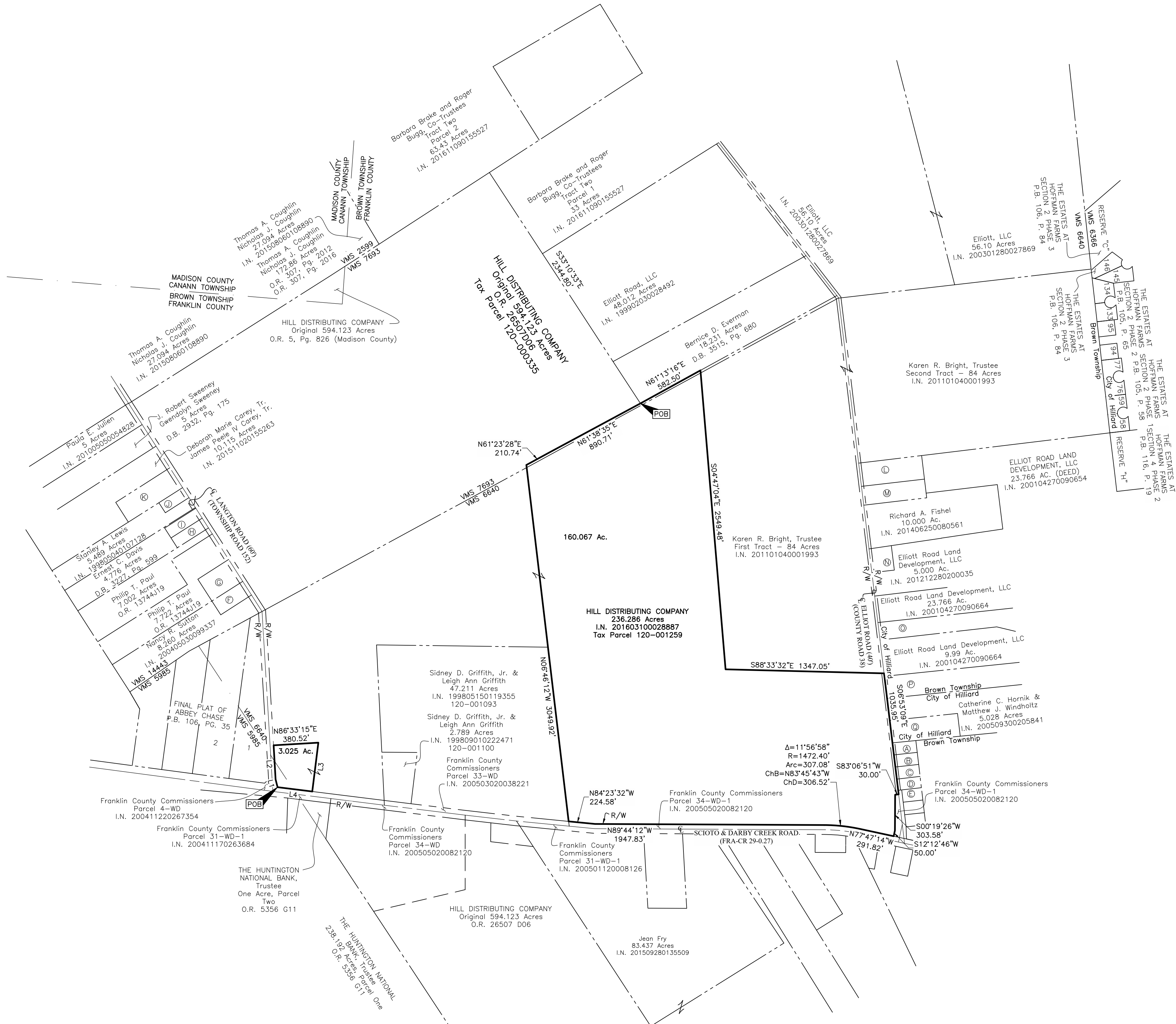


EXHIBIT "B-2"

<p style="font-size: 8pt; margin: 0;">Evans, Mechwart, Hambleton &amp; Tilton, Inc. Engineers • Surveyors • Planners • Scientists 5500 New Albany Road, Columbus, OH 43054 Phone: 614.775.4500 Toll Free: 888.775.3648 emht.com</p>	Date: September 26, 2017	
	Scale: 1" = 500'	
	Job No: 2016-1176	
	Sheet: 1 of 1	
REVISIONS		
MARK	DATE	DESCRIPTION

J:\2016\1176\DWG\CASHEETS\EMHETS\20161176-VS-EXBT-ZONE-01-REV1.DWG plotted by: CHARRA, SHAMUS on 5/1/2018 8:42:22 AM last saved by: SCHARRA on 1/26/2018 8:07:30 AM