



Real People. Real Possibilities.™

THE CITY OF  
**COLUMBUS**



AMERICAN  
**STRUCTUREPOINT**  
INC.

# SCIOTO DARBY ROAD / WALCUTT ROAD AND SCIOTO DARBY ROAD / LEAP ROAD CORRIDOR IMPROVEMENTS

## CIP T-76

City of Hilliard, Franklin County, Ohio

October 15, 2018 5:30-7:00 PM

Formal presentation to begin at 6:00 PM

### PURPOSE OF TODAY'S MEETING

The City of Hilliard, in a joint collaboration with the City of Columbus, is studying improvements to the Scioto Darby Road corridor that includes the Walcutt Road and Leap Road/Darby Glen Boulevard/Scioto Darby Creek Road intersections. The public is encouraged to provide comments on the alternatives presented. Please review the materials and speak with the project team regarding your questions. To submit comments on the project, please fill out a comment form and submit at the meeting, e-mail Letty Schamp at [lschamp@hilliardohio.gov](mailto:lschamp@hilliardohio.gov), or mail your input **BY OCTOBER 31, 2018** to:

Letty Schamp, PE  
City of Hilliard  
3800 Municipal Way  
Hilliard, OH 44805

### PROJECT DESCRIPTION

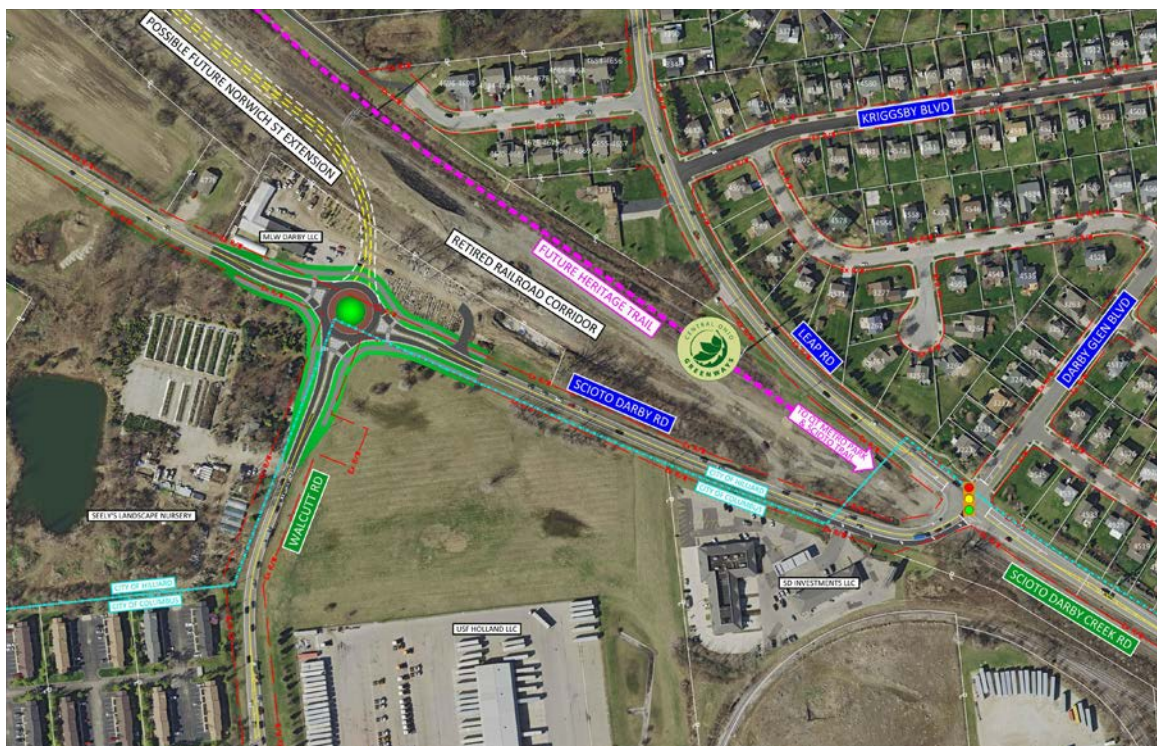
This study evaluates several alternatives for alleviating capacity and operational problems associated with Scioto Darby Road between Walcutt Road and Leap Road. These alternatives include multiple combinations of roundabouts and signalized intersections as well as potential road and intersection realignments. The main purpose of this analysis is to present alternatives and recommendations for selection based upon factors such as intersection operations, constructability, impacts to adjacent land owners, construction costs, and environmental impacts.

## PROJECT CHALLENGES AND ISSUES

- Both Walcutt Road and Leap Road intersections are multi-jurisdictional with Columbus
- Long vehicle backups in both AM and PM peak hours
- Heavy congestion on Scioto Darby Road impacts adjacent intersections



## ALTERNATIVE 1 ROUNDABOUT ON EXISTING ALIGNMENT AT SCIOTO DARBY ROAD/WALCUTT ROAD WITH TRAFFIC SIGNAL AT SCIOTO DARBY ROAD/LEAP ROAD



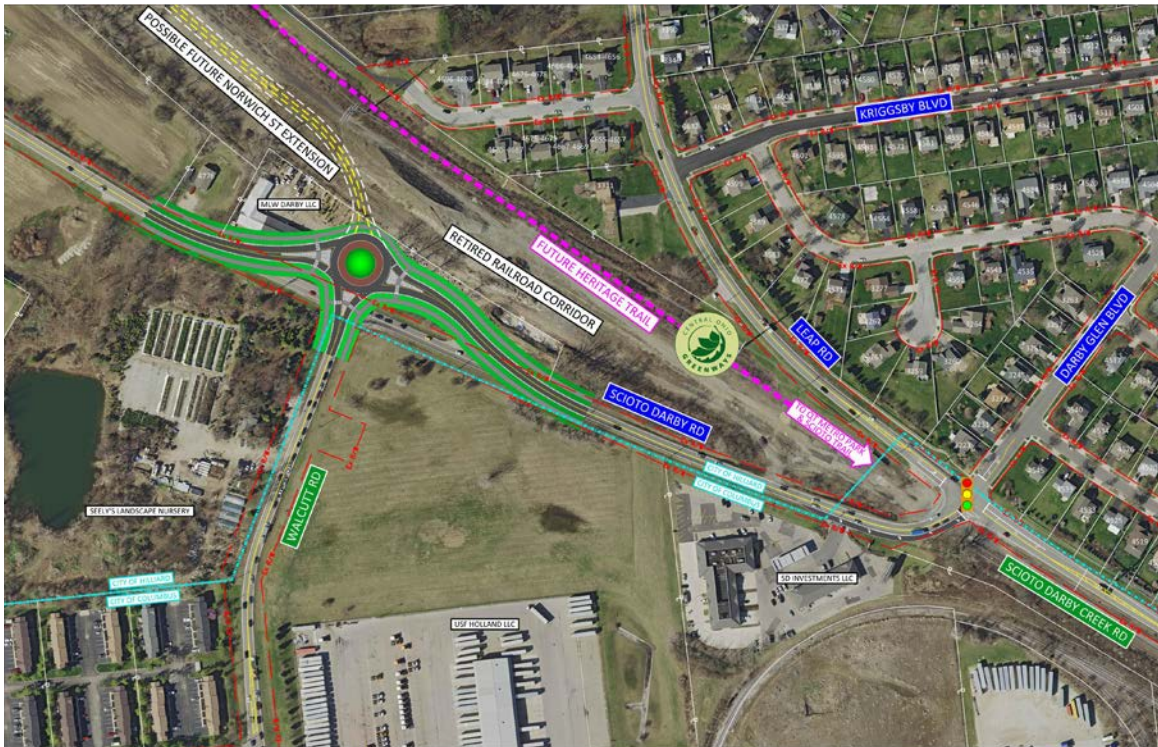
### PROS

- Safety
- Relieves congestion
- Single-lane roundabout
- Traffic signal at Leap Road can be phased later by Columbus

### CONS

- Traffic impacts during construction
- Roundabout is multi-jurisdictional

**ALTERNATIVE 2** ROUNDABOUT ON RELOCATED ALIGNMENT AT SCIOTO DARBY ROAD/WALCUTT ROAD WITH TRAFFIC SIGNAL AT SCIOTO DARBY ROAD/LEAP ROAD



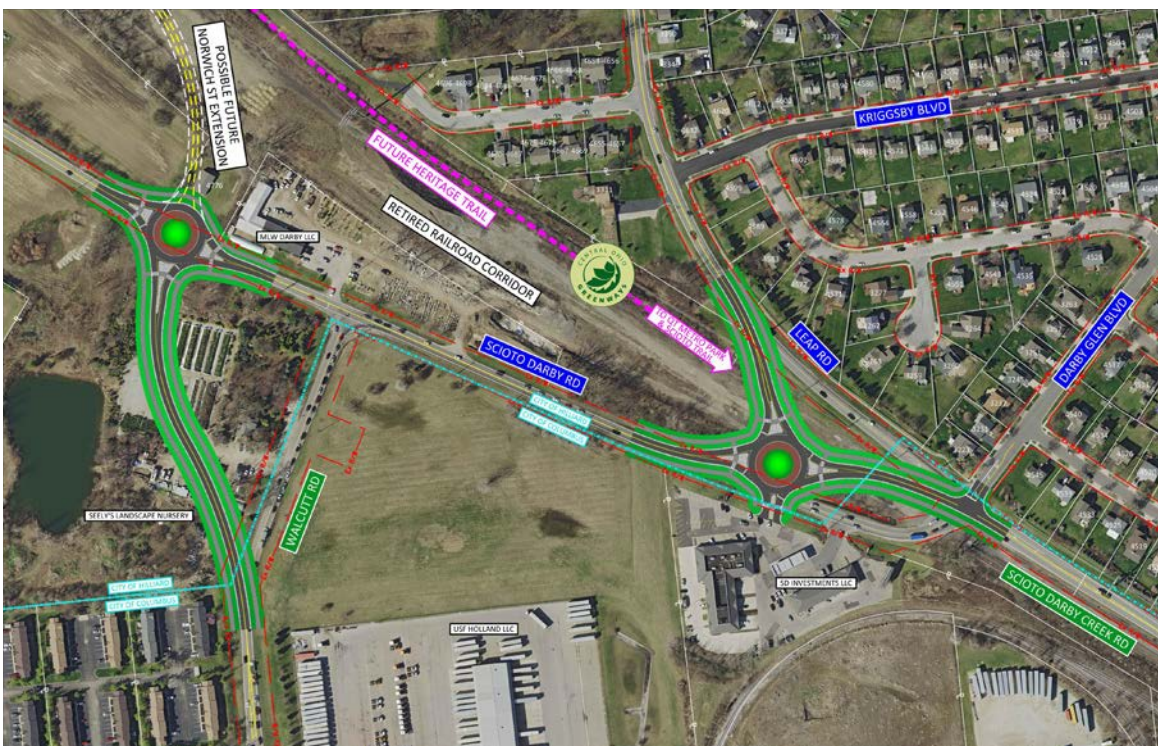
**PROS**

- Safety
- Relieves congestion
- Single-lane roundabout
- Minimal traffic impacts during construction
- Roundabout will be entirely in Hilliard
- Leap Road traffic signal can be phased later by Columbus

**CONS**

- Impact to existing business

**ALTERNATIVE 4** ROUNDABOUT AT RELOCATED SCIOTO DARBY ROAD/WALCUTT ROAD WITH ROUNDABOUT AT RELOCATED SCIOTO DARBY ROAD/LEAP ROAD



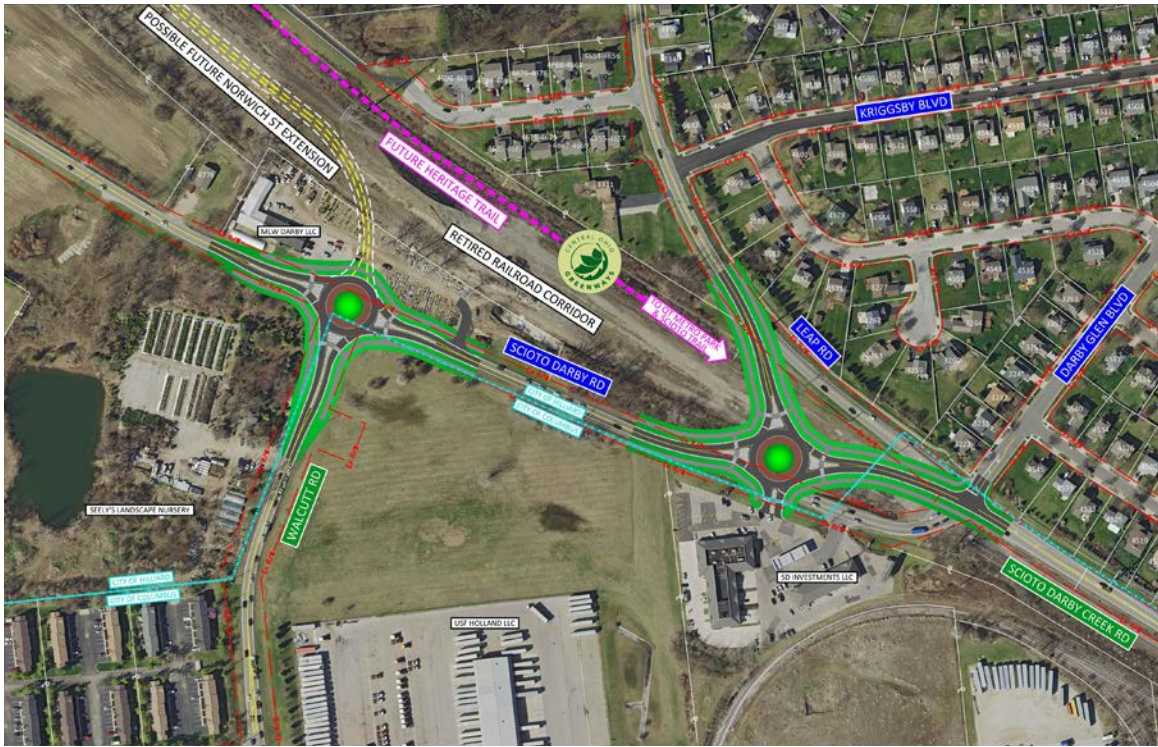
**PROS**

- Safety
- Relieves congestion
- Roundabouts are single-lane
- Both roundabouts located in Hilliard
- Leap Road roundabout can be phased later by Hilliard

**CONS**

- Impacts to businesses
- Impacts to railroad property
- Higher cost to Hilliard for second roundabout

**ALTERNATIVE 5** ROUNDABOUT ON EXISTING ALIGNMENT AT SCIOTO DARBY ROAD/WALCUTT ROAD WITH ROUNDABOUT AT RELOCATED SCIOTO DARBY ROAD/LEAP ROAD



**PROS**

- Safety
- Relieves congestion
- Leap Road roundabout can be phased later by Hilliard

**CONS**

- Impacts to business
- Impacts to railroad property
- Higher cost to Hilliard for second roundabout

**OTHER ALTERNATIVES EVALUATED**

**ALTERNATIVE 3**



**ELIMINATED DUE TO:**

- Residential impacts at Kriggsby Boulevard
- Change in traffic routing results in decreased capacity and safety at Leap Road/Kriggsby Boulevard intersection
- Challenging roundabout operations and speed control due to angles of approach streets

**ALTERNATIVE 6**



**ELIMINATED DUE TO:**

- Residential impacts at Darby Glen Boulevard
- Impact to railroad property (active)
- Challenging roundabout operations and speed control due to angles of approach street