

HEALTHY HILLIARD

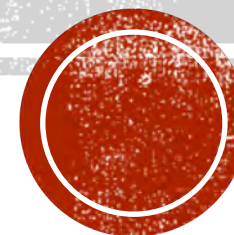
Mind, Body, & Soul



Real People. Real Possibilities.™



EGG CARTON SPRING CHICKS





YOU WILL NEED

- Egg Carton (Styrofoam Works, Too)
- Multiple Colors of Paint (Acrylic is Preferred)
- Paintbrush(es)
- Black Marker
- Liquid Glue (Or Hot Glue, with a Parent's Help)
- Strong Scissors
- Colored Construction Paper OR White Paper and Markers/Paint to Color Paper



- These steps are best for an adult or experienced scissor user, as the thicker cardboard sections will be a bit more difficult to cut through.



1

Start with your egg carton and, using scissors, cut it in half. Remove the closure tab. Discard the lid and closure tab.



2

Cut each individual section apart.



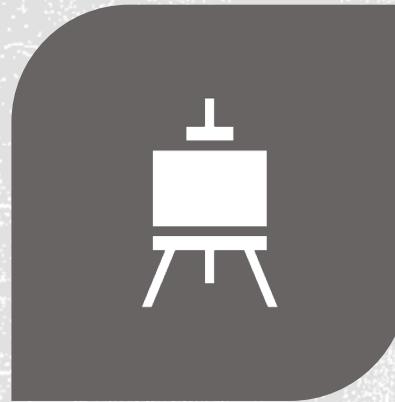
3

Once each section is separated, remove the edges and points to make a flat/level top.





PAIN**T**



IF YOU ARE USING MULTIPLE PAINT COLORS
PAIR YOUR CARTON PIECES BEFORE
PAINTING AFTER ALL OF YOUR EDGES ARE
SMOOTH, CREATING THE BEST EGG SHAPES.
IT'S EASIER TO GLUE TOGETHER SIMILAR
PIECES. FOR EXAMPLE, CORNER PIECES OF
THE CARTON WE USED HAD TWO DIVOTS IN
THEM. OTHER PIECES HAD THREE DIVOTS.

PAINT ONE PAIR OF CARTON PIECES PER
CHICK.

MAKE BEAKS



While your egg carton pieces are drying, it's time to cut out beaks and feathers for the heads of your chicks.



Cut one small orange square for each chick's beak. Cut one small rectangle of each color of chick you plan to make. Scissors shown for scale. If you don't have construction paper, use plain printer paper and cut out the same shapes. Then, color or paint the white paper to match the color you need.



To make beaks: Fold each of the squares in half diagonally.

MAKE FEATHERS



If you have craft feathers laying around, use these! If not, fold small rectangles in half hot-dog style.



Cut a small triangle diagonally off the top of the rectangle you just folded in half. Cut diagonal slits inward toward the spine of your folded rectangle. Be careful not to cut all the way through. These will create a feathered look.



Cut off the bottom one or two feather pieces before the spine to create a stem. You can alternate the directions your feathers go by cutting in opposite directions. Get creative!

ASSEMBLE YOUR CHICKS



Take two corresponding colored pieces of egg carton and grab your glue. Add glue to one piece of the egg carton around the edge of the top of the egg carton piece. This piece will be on the bottom.



Take the other piece of egg carton and place it on top of the piece you just put glue on. Think of this like putting a cap on – the bottom piece will be slightly inside the top piece.



Next, draw your eyes on using a black marker. Give your chick whatever expression you want! Glue a feather to the top of the carton pieces and a beak under the eyes you just drew, and let it dry. Now you have a complete chick!



**DECORATE A FLOCK OF
SPRING CHICKS AND
SHARE THEM WITH US
ON FACEBOOK!**

